



Uro-gynæcologic Surgery

swing - SYSTEM[®]
evolution

Product Catalog

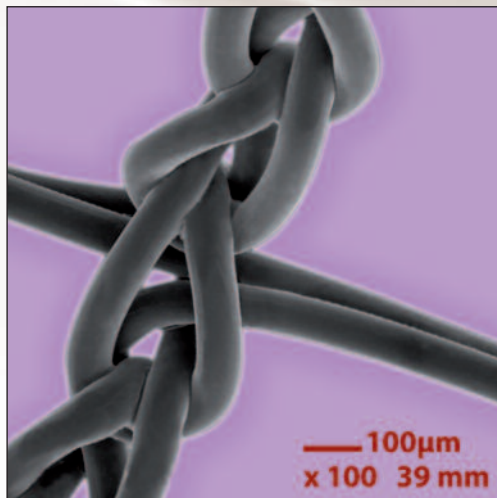
swing

TECHNOLOGIES
a THT bio-science division



Light and ultralight prostheses...

Swing-system® is a full range of implants designed for women pelvic floor correction. Rectangular-holed sealed knitted mesh made of polypropylene (PP) monofilament. The mesh is permeable, translucent and atraumatic in two versions (light and ultralight). With an excellent biostability, this material promotes good initial and long-term colonization suitable for pelvic floor surgery.



SURGICAL CONCEPT

Surgical concept of 10 years clinical history, Swing-system® is a prolapse or urinary incontinence treatment by vaginal or laparoscopic approach surgeries :

- Correction of deficient fascias by prosthesis positioning
- Precut prosthesis with disposable or reusable instrumentations.
- No systematic hysterectomy
- Restoration of vagina depth and perineum axis

... a full range for pelvic floor correction

CYSTO-swing®

“TENSION FREE”

- Cystocele
- Vesical reservoir ptosis
- Anterior floor prolapse

RECTO-swing®

SPINAL FIXATION
OR TRANSGLUTEAL

- Rectocele
- Elythrocele
- Hysterocele
- Vaginal vault prolapse

swing-BAND®

“NO TOUCH”

Stress urinary incontinence

JUST-swing®

SVS “Secured Vaginal sling”

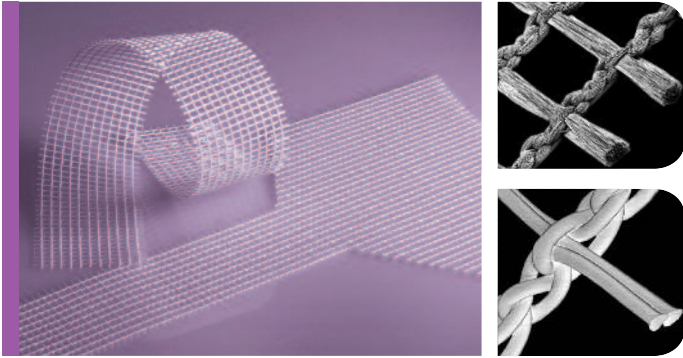
Stress urinary incontinence by adjustable mini-sling

PRO-swing®

SACROCOLPOPEXY

- Cystocele
- Rectocele
- Urinary incontinence

PRO-swing[®] S A C R O C O L P O P E X Y



A D V A N T A G E S

- Easy handling
- Not damaged by sutures or tacks
- Shape memory
- Macroscopic structure for quick optimal tissue ingrowth
- PS4 : Light weight polypropylene monofilament

Kit includes :

- a back prosthesis to be fixed to levators to stop rectocele
- a front prosthesis for cystocele cure
- a prosthesis for incontinence cure (Burch type).

PS2 POLYESTER

DESCRIPTION

- Polyester multifilaments (polyethylene terephthalate) PET prosthesis.
- Openwork knit with locked rectangular stitches

Weight: 105 g/m² - Pore size: 1 x 1,5 mm

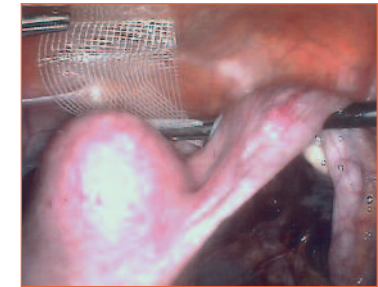
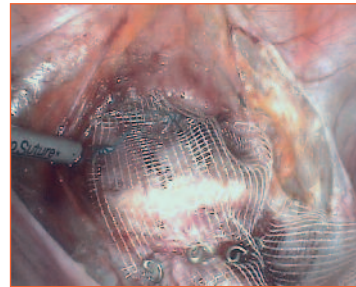
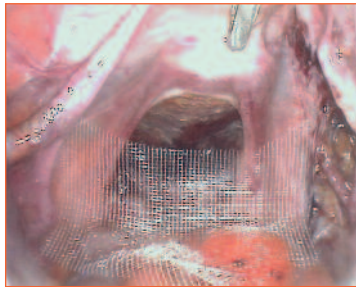
Thickness: 0,54 mm - Mean Elongation: 43 %

Mean Resistance: 40 daN

Mean values given as an indication

INDICATION

Precut prosthesis for promontofixation by laparoscopic approach



	Ref.	Size in cm
	PS2 18063	18 x 2,5 (x2) 18 x 6
	PS2 18083	18 x 2,5 (x2) 18 x 8
	PS2 18084	18 x 4 18 x 2,5 18 x 8
	PS2 24084	24 x 4 24 x 2,5 24 x 8

non-exhaustive reference list

PS4 POLYPROPYLENE

DESCRIPTION

- Light polypropylene monofilament (PP) prosthesis.
- Openwork knit with locked rectangular stitches

Weight: 45 g/m² - Pore size: 1,5 x 1,5 mm

Thickness: 0,4 mm - Mean Elongation: 51 %

Mean Resistance: 24 daN

Mean values given as an indication

INDICATION

Precut prosthesis for promontofixation by laparoscopic approach

	Ref.	Size in cm
	PS4 18062	18 x 4 18 x 6
	PS4 18063	18 x 2,5 (x2) 18 x 6
	PS4 18084	18 x 4 18 x 2,5 18 x 8
	PS4 24084	24 x 4 24 x 2,5 24 x 8

non-exhaustive reference list



Creating... together !

swing

TECHNOLOGIES
Digestive & Uro-gynécologic surgery

 **balmer medical**

Balmer Médical SA
Rte de Provence
1426 Concise

Tél. +41 24 436 29 07
info@balmermedical.ch
www.balmermedical.ch

Made in France by :

THT
bio-science