



Habib[®] 4x

Bipolar Resection Device



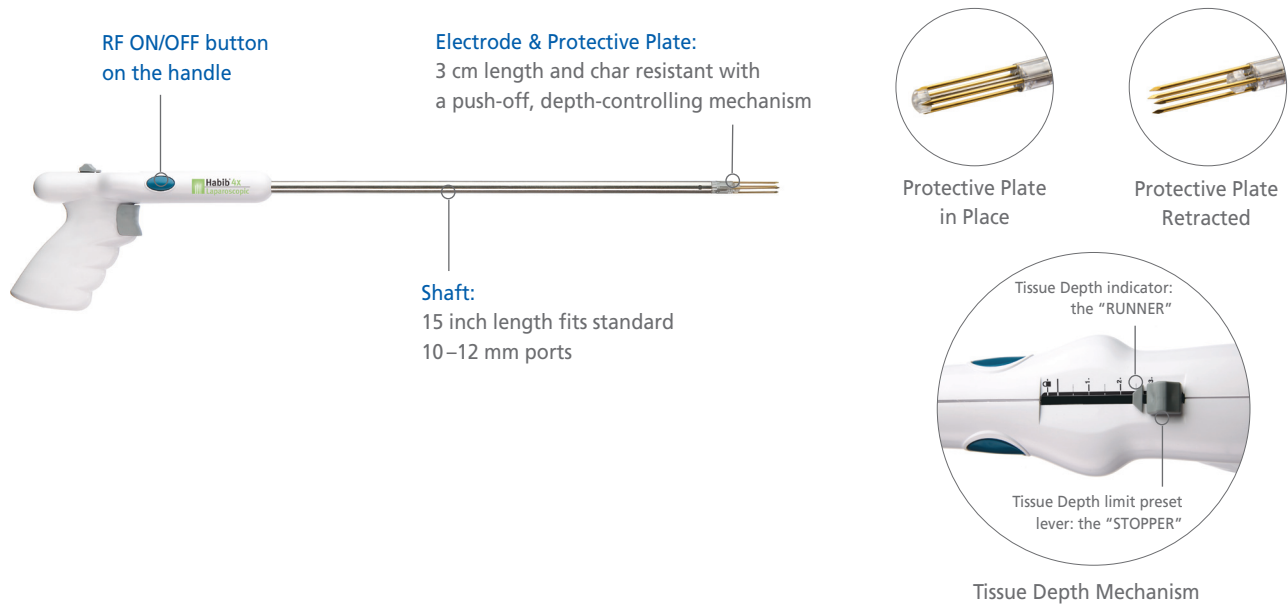
 balmer medical

ANGIODYNAMICS[®]

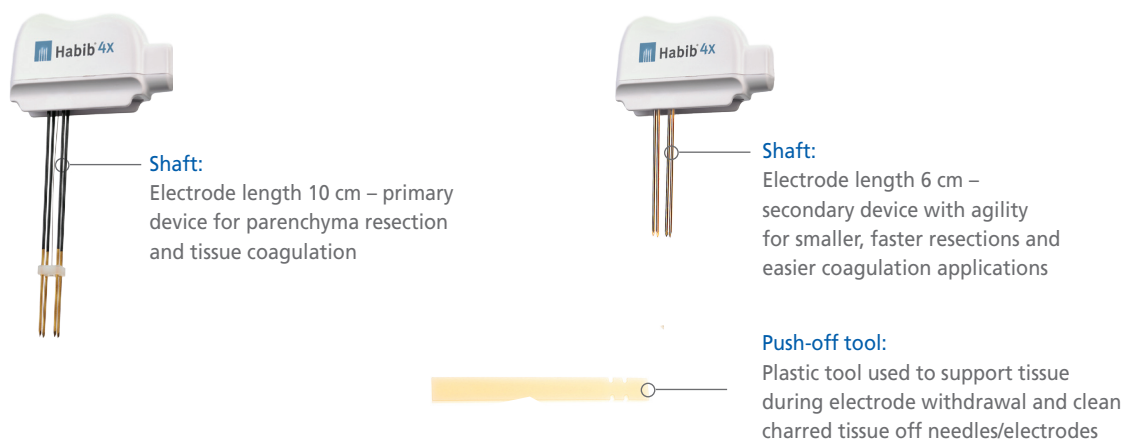
The Ultimate in Speed and Simplicity

HABIB® 4X BIPOLAR RESECTION DEVICES

Habib® 4X Laparoscopic Surgery Bipolar Resection Device



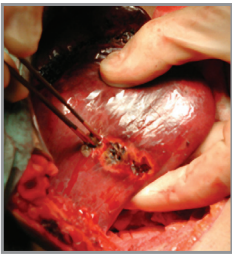
Habib® 4X Bipolar Resection Device



The Habib 4X Bipolar Resection Devices procedure protocols are as simple as: Coagulate, Cut and Excise

Liver Procedural Applications

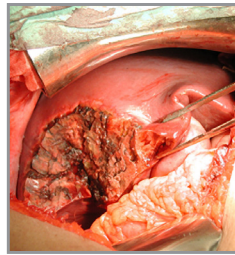
Habib 4X Open and Habib 4X Laparoscopic Bipolar Resection Devices provide the ability to pre-coagulate liver parenchyma including difficult cirrhotic tissue with minimal blood loss and reduced ICU stays²



Coagulate



Cut



Excise

"The mean blood loss during parenchymal transection was 75 mL, which is lower than in most major published series"²

Kidney Procedural Applications

New AUA guidelines recommend a Partial Nephrectomy (PN) for patients with T1 tumors < 4 cm.³ Habib 4X Open and Habib 4X Laparoscopic Bipolar Resection Devices are outstanding tools to help Urologists transition to PN.



Coagulate



Cut



Excise

"No patient has required a blood transfusion, clamping of the hilum, or conversion to nephrectomy or open surgery for bleeding."⁴

BENEFITS

- Coagulates an area of tissue approximately 1 cm wide with a depth of up to 4 cm in an average of 8 seconds
- Coagulates and seals vessels up to 3 mm in one application⁶
- Reduces blood loss during hepatic and renal surgeries^{1, 2, 4}
- Eliminates the need for vascular clamping in renal and hepatic surgeries^{1, 2, 4}
- Reduces operating room time and patient recovery time in major vascular tissue surgeries⁵

1. Pai, M., et al. Laparoscopic Habib 4X: A Bipolar Radiofrequency Device for Bloodless Laparoscopic Liver Resection. HPB (Oxford) 2008; 10: 261-264.
2. Ayav A, Jiao L, Dickinson R, et al. Liver Resection with a New Multiprobe Bipolar Radiofrequency Device. Arch Surgery 2008; 143: 396-401.
3. Campbell, Steven C., et al. Guideline for Management of the Clinical T1 Renal Mass. American Urological Association of Education and Research; 2009.
4. Nadler, Robert B., Kent. Hybrid Laparoscopic and Robotic Ultrasound-guided Radiofrequency Ablation-assisted Clamless Partial Nephrectomy. Urology 2009; 74(1): 202-205.
5. Pai, M., et al. Liver Resection with Bipolar Radiofrequency Device: Habib 4X. HPB (Oxford) 2008; 10: 256-260.
6. Wagman, Lawrence, et al. Liver Resection Using a Four-Prong Radiofrequency Transection Device. The American Surgeon 2009; 75: 991-994.

HABIB® 4X RESECTION DEVICES

Product Name	Part #
Habib 4X Kit	4401
Habib 4X Laparoscopic	700-103659
1500X RF Generator Adapter Cable	700-103285
Software Module (Version 8.12 or higher)	700-103885

Habib 4X Adapter Cable



Habib 4X adapter cable is specifically designed for use with the AngioDynamics 1500X RF Generator and is a required accessory with the Habib 4X Open surgical device. The Habib 4X Laparoscopic device is packaged with a sterile pre-attached adapter cable.

Model 1500X RF Generator

The Model 1500X RF Generator is designed specifically for use with AngioDynamics' electrosurgical devices. It is the latest radiofrequency generation system that features technological advances including software upgrade capabilities, potential for 250 watts of power, and three flexible serial ports.



IMPORTANT RISK INFORMATION

INDICATION FOR USE: The Habib® 4X device is used to transmit bipolar radiofrequency energy (provided by the 1500X RF Generator) and to assist in intraoperative coagulation of tissue during surgical procedures. The Habib® 4X Laparoscopic device is used to transmit bipolar radiofrequency energy (provided by the 1500X RF Generator) and to develop a plane of coagulative necrosis along the intended line of transection. The tissue can subsequently be divided with a conventional scalpel through this zone of necrosis. **CAUTION:** Federal (USA) law restricts the sale of these devices by or on the order of a physician.

CONTRAINDICATIONS: Do not use on patients with cardiac pacemakers or other active implants.

WARNINGS AND PRECAUTIONS: For single use only. Do not bend/kink the needle arrays or attach anything (i.e., clamps, etc.) to the device; inadvertent patient injury may result. Do not use needle-monitoring or dispersive electrodes. This device may interfere with the operation of other electronic equipment. Improper placement or handling of bipolar electrodes while RF is on may lead to burns. Please see package insert for complete list of warnings and precautions and observe all instructions prior to use.

POTENTIAL COMPLICATIONS: Possible complications include problems related to general anesthetics, bleeding, liver abscess, bile leak, liver failure, subphrenic abscess, postoperative heart failure, chest infection, wound dehiscence, wound infection or incisional hernia.

Indications, contraindications, warnings and instructions for use can be found in the instructions for use supplied with each device. Observe all instructions prior to use. Failure to do so may result in patient complications.



Balmer Médical SA - Rte de Provence - 1426 Concise
Tél. +41 24 436 29 07 - info@balmermedical.ch

www.balmermedical.ch