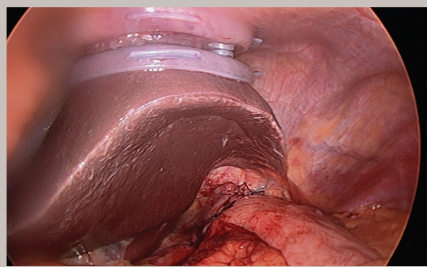
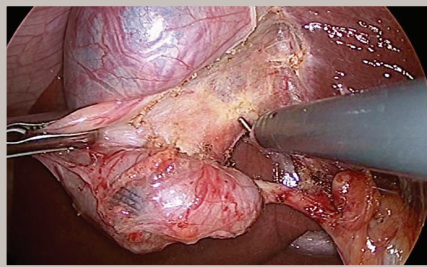
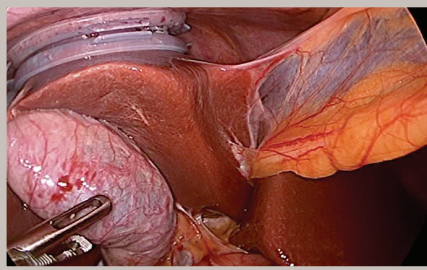


The LiVac Retractor System

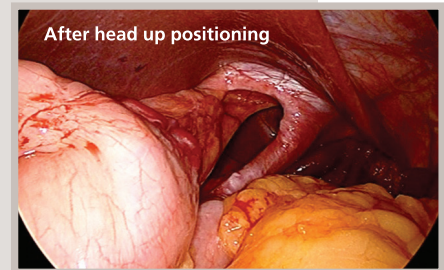
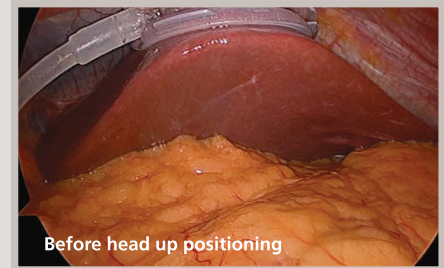
A New Gentle Way to Retract the Liver

The LiVac Retractor System is a soft and flexible silicone ring device, for use during any laparoscopic procedures requiring liver retraction. The LiVac Retractor System lifts the liver to the diaphragm using suction. The suction tubing uses the same incision as the laparoscopic port, therefore no separate incision is required for liver retraction.



Key Features of the LiVac Retractor System:

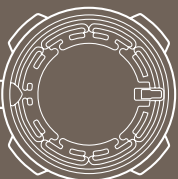
- Safe and effective liver retraction using regulated suction
- No extra abdominal incision required
- Enables reduced port laparoscopy with minimal technique adjustment
- Easy to use and fully disposable
- Two sizes available catering for different liver lobe sizes
- Accessory bevel included for use with Hasson Port
- Does not compress liver parenchyma
- The LiVac is the only retractor which attaches to the upper surface of the liver, and stays out of the field of surgery
- Combine with mini-laparoscopy for truly minimally invasive surgery



Intellectual Property

Patents granted: Australia, US, NZ, China and Japan. Pending in all other territories.
Design Registrations granted: Australia, EU, Taiwan, Japan and Israel.
LiVac is a registered trademark

 balmer medical



LiVac

www.balmermedical.ch

For further information, please feel free to contact us on
+41 (0)24 436 29 07

Balmer Médical SA - Rte de Provence 52 - CH-1426 Concise

info@balmermedical.ch